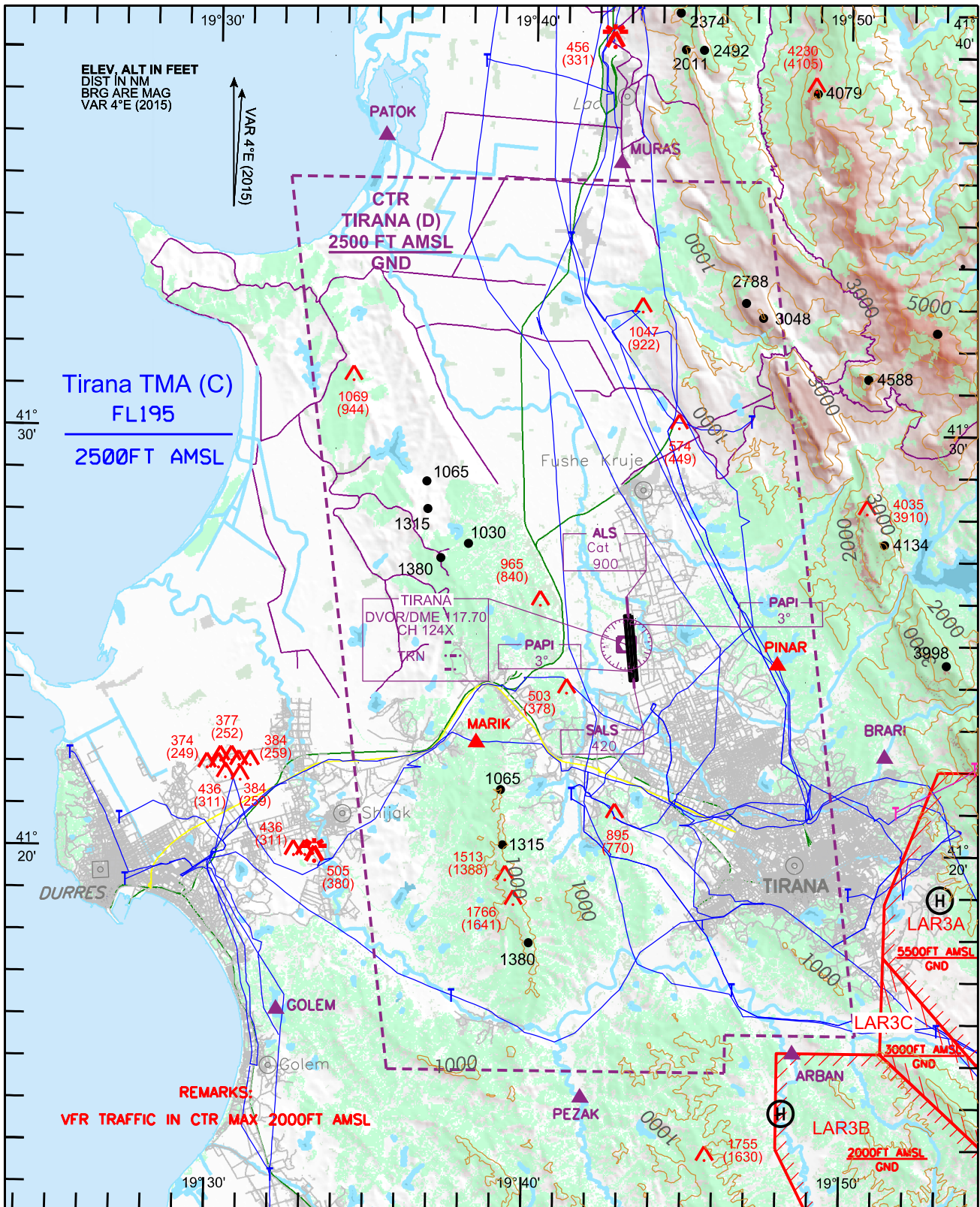


VISUAL
APPROACH
CHART - ICAO

AERODROME ELEVATION
125 FT

ATIS	132.275
TWR	122.500
	123.500

TIRANA LATI



ARBAN	41°15'16"N	019°48'30"E
PEZAK	41°14'10"N	019°41'50"E
BRARI	41°22'20"N	019°51'18"E
MURAS	41°36'25"N	019°42'44"E
PATOK	41°37'00"N	019°35'16"E
GOLEM	41°16'10"N	019°32'12"E
MARIK	41°22'37"N	019°38'23"E
PINAR	41°24'33"N	019°47'52"E

THIS PAGE INTENTIONALLY LEFT BLANK